



Also Available As A Modular!

Energy Star Homes Available



Aaron
aaronb@midmaine.com



Matt
mball@midmaine.com



Peter
peterm@midmaine.com

Options: Model 937G

North Zone Construction	1,287
New England Code	70
State of Maine Seal	200
House Wrap (Hud Code)	165
Marriage Line Gasket (HUD Code)	106
7/16" OSB Sheathing	594
Ice Guard	212
Pier Support per Door (2)	30
Oil Gun Furnace	424
Furnace Stack Extension	21
40 Gal. Hot Water Electric ILO 30 Gal	53
Water Shut-off Valve	53
Programmable Thermostat ILO Std	69
Plumb for Gas Dryer	42
Beaded Panel Box Cover	65
Ceramic Hearth at Fireplace	50
Wood Burning Fireplace with Blower and Ceramic Surround	800
TV Niche at Fireplace	150
Fireplace Bookcase (2)	266
Recessed Can Lights (6)	312
9-Lite Steel Rear Door	325
Vinyl Window Lineals	240
Plantation Window Shutters	200
Nickel Exterior Light ILO Std	32
Vinyl Shake Shingle Siding	599
Straight 4" Siding ILO Dutch Lap	100
Raised Elongated Toilet (2)	200
24"x48"Tempered Glass Windows @MB Tub (2) HUD Code	390
Linen Closet	175
Tub Overdrape	58
Deluxe Bath Accessories	90
200 Amp Service	85
Paddle Fan with Light in Family Room and Living Room	200
(4) Phone Jacks	180
(4) Cable Jacks	180
Ultimate Kitchen Package	2,795
Ceramic Edging @ Kitchen Counter & Island	375
Ceramic Tile Backsplash @ Kitchen	117
Black Cabinet Pulls	50
Under Cabinet Molding	93
Hanging Snack Bar Light (2)	74
7' Computer Desk	300
Ceramic Edging and Backsplash at Desk	445
Overhead Cabinets w/Rod @ Washer/Dryer	155
Preacher's Bench	100

Options Total: **\$12,527**

Base Price: **\$77,195**

*Wind Zone II add \$2,000

Base Price plus Options: **\$89,722***

(Furniture & Décor for Display Purposes Only)
(Prices Subject to Change)



Champion Model 937G



**SHOWCASE
HOMES**
of Maine

718 Wilson Street
Brewer, ME 04412

Tel. (207) 989-2337
Fax (207) 989-2632
Toll Free
(866)-783-2337

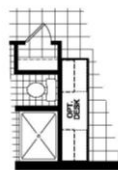
**Models on
Display**

**One
Step
at
a
Time**

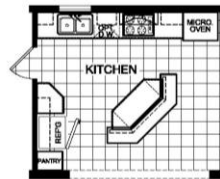
**We Make
it
Easy**



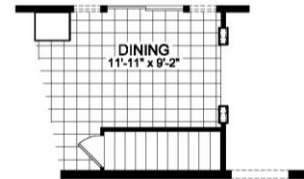
Base Price: \$77,195



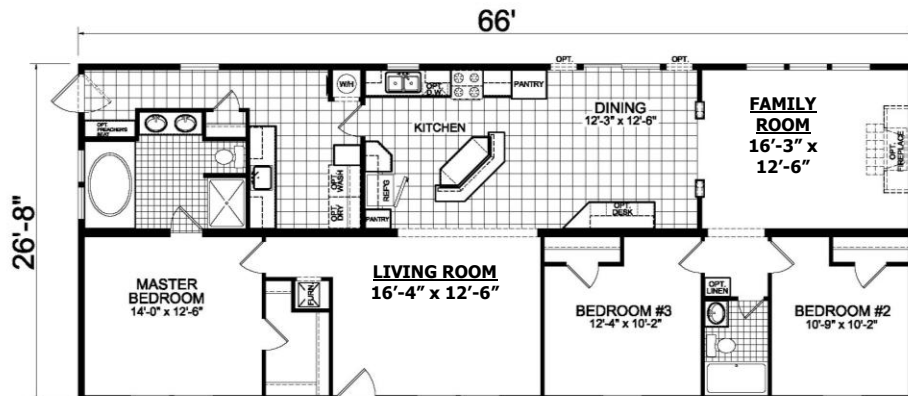
OPT. COMPUTER DESK



OPT. ULTIMATE KITCHEN



OPT. STAIRWELL



MODEL 937
3 BEDROOM, 2 BATH
NOMINAL SIZE: 28' x 70'
ACTUAL SIZE: 26'-8" x 66'-0"
TOTAL AREA: 1760 SQ. FT.

THE NEW
CHAMPION 

www.showcasehomesofmaine.com